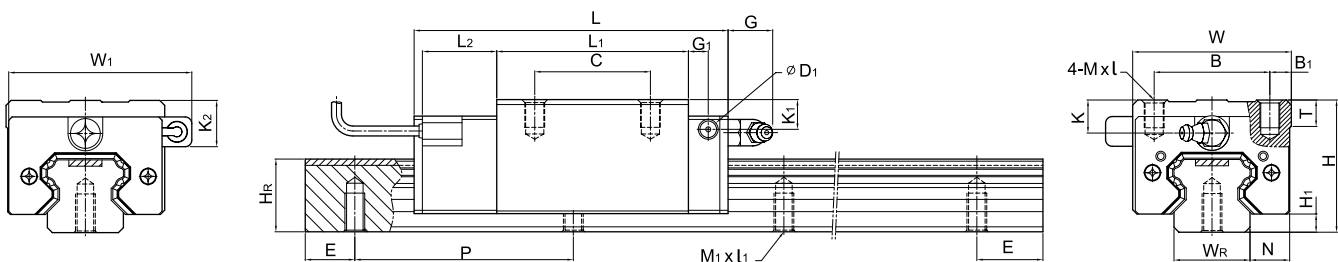


PG型式
定位型线性滑轨

2-12-5 PG Type定位直线导轨尺寸表
(1) PGHH-CA / PGHH-HA



型号	组件尺寸 (mm)			滑块尺寸 (mm)																导轨尺寸(mm)					基本 动额 定负荷	基本 静额 定负荷	重量	
	H	H ₁	N	W	W ₁	B	B ₁	C	L	L ₁	L ₂	G	G ₁	D ₁	K	K ₁	K ₂	Mx _l	T	W _R	H _R	M ₁ x _{l₁}	P	E			C(kN)	C ₀ (kN)
PGHH20CA	30	4.6	12	44	52	32	6	36	90.5	50.5	25	12	6	5	6	7	10	M5x6	8	20	17.5	M6x10	60	20	27.1	36.68	0.38	2.05
PGHH20HA								50	105.2	65.2															32.7	47.96	0.39	
PGHH25CA	40	5.5	12.5	48	55.4	35	6.5	35	95	58	22.5	12	6	5	10	9	14	M6x8	8	23	22	M6x12	60	20	34.9	52.82	0.51	3.05
PGHH25HA								50	116	78.6															42.2	69.07	0.69	
PGHH30CA	45	6	16	60	67	40	10	40	110	70	23	12	6	5	9.5	13.8	19	M8x10	8.5	28	26	M8x15	80	20	48.5	71.87	0.88	4.31
PGHH30HA								60	133	93															58.6	93.99	1.16	
PGHH35CA	55	7.5	18	70	77	50	10	50	123	80	23.4	12	7	5	16	19.6	23.5	M8x12	10.2	34	29	M8x17	80	20	64.6	93.88	1.45	6.14
PGHH35HA								72	148.8	105.8															77.9	122.77	1.92	
PGHH45CA	70	9.5	20.5	86	91	60	13	60	148	97	24.5	12.9	10	8.5	18.5	30.5	30.5	M10x17	16	45	38	M12x24	105	22.5	103.8	146.71	2.73	10.25
PGHH45HA								80	179.8	128.8															125.3	191.85	3.61	
PGHH55CA	80	13	23.5	100	106	75	12.5	75	172.7	117.7	26	12.9	11	8.5	22	29	28.5	M12x18	17.5	53	44	M14x25	120	30	153.2	211.23	4.17	14.92
PGHH55HA								95	210.8	155.8															184.9	276.23	5.49	

注：1 kgf = 9.81N