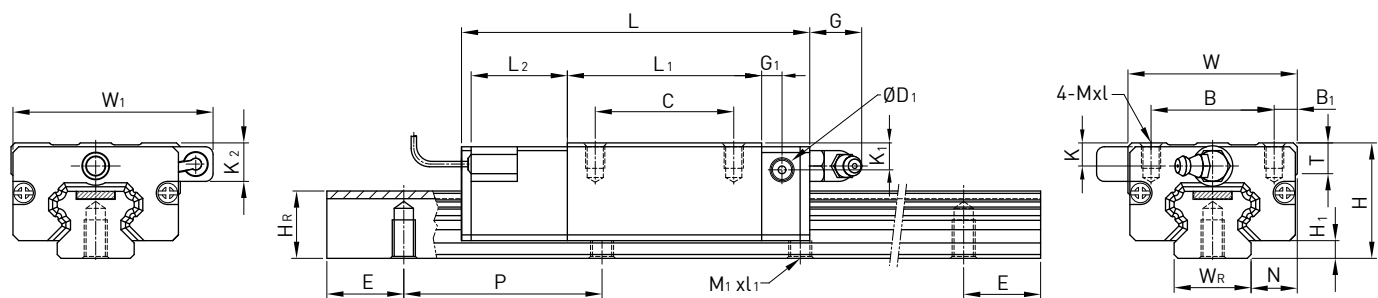


PG型式
定位型线性滑轨

(5) PGHL-CA / PGHL-HA



型号	组件尺寸 (mm)			滑块尺寸 (mm)																导轨尺寸(mm)					基本 动额 定负荷	基本 静额 定负荷	重量	
																											滑块	导轨
	H	H ₁	N	W	W ₁	B	B ₁	C	L	L ₁	L ₂	G	G ₁	D ₁	K	K ₁	K ₂	MxL	T	W _R	H _R	M ₁ xL ₁	P	E	C(kN)	C ₀ (kN)	kg	kg/m
PGHL25CA	36	5.5	12.5	48	55.4	35	6.5	35	95	58	22.5	12	6	5	6	9	14	M6x6	8	23	22	M6x12	60	20	34.9	52.82	0.51	3.05
PGHL25HA								50	116	78.6															42.2	69.07	0.69	
PGHL30CA	42	6	16	60	67	40	10	40	110	70	23	12	6	5	6.5	10.8	16	M8x10	8.5	28	26	M8x15	80	20	48.5	71.87	0.88	4.31
PGHL30HA								60	133	93															58.6	93.99	1.16	
PGHL35CA	48	7.5	18	70	77	50	10	50	123	80	23.4	12	7	5	9	12.6	16.5	M8x12	10.2	34	29	M8x17	80	20	64.6	93.88	1.45	6.14
PGHL35HA								72	148.8	105.8															77.9	122.77	1.92	
PGHL45CA	60	9.5	20.5	86	91	60	13	60	148	97	24.5	12.9	10	8.5	8.5	20.5	20.5	M10x17	16	45	38	M12x24	105	22.5	103.8	146.71	2.73	10.25
PGHL45HA								80	179.8	128.8															125.3	191.85	3.61	
PGHL55CA	70	13	23.5	100	106	75	12.5	75	172.7	117.7	26	12.9	11	8.5	12	19	18.5	M12x18	17.5	53	44	M14x25	120	30	153.2	211.23	4.17	14.92
PGHL55HA								95	210.8	155.8															184.9	276.23	5.49	

注：1 kgf = 9.81N