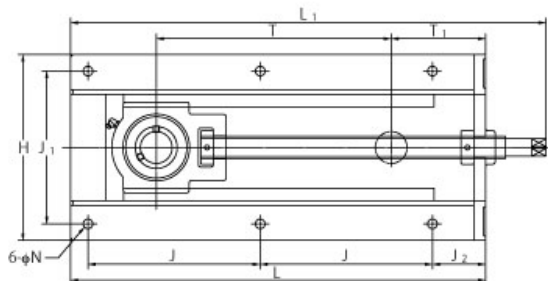
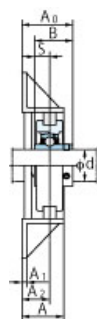
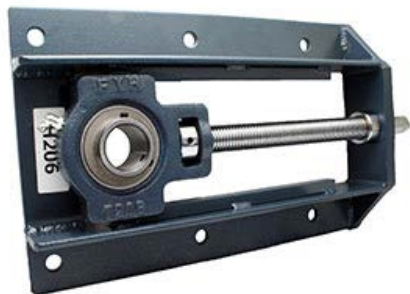


UCTH210J-300



样式	
轴承座型号	H210-300
轴承公称型号	UC210
轴径	50 mm
轴承座固定螺栓	M12 7/16 in
质量	12.6 kg 27.78 lb
轴固定方法	顶丝
适用油嘴	B-1/4-28UNF

主要尺寸	
H	234 mm 9-7/32 in
L	527 mm 20-3/4 in
L1	603 mm 23-3/4 in
A	50 mm 1-31/32 in
J	219 mm 8-5/8 in
J1	192 mm 7-9/16 in
J2	67 mm 2-5/8 in
N	15 mm 19/32 in
T	296 mm 11-21/32 in
T1	121 mm 4-3/4 in
A1	6 mm 1/4 in
A2	35 mm 1-3/8 in
A0	67.6 mm 2-21/32 in
B	51.6 mm 2.031 in
S	19 mm 0.748 in

基本额定负荷	
Cr	35.1 kN 7891 lbf
Cor	23.3 kN 5238 lbf
系数 fo	14.4